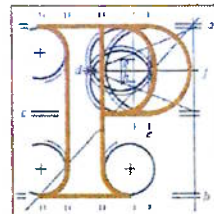


Our Case Number: ABP-317810-23



**An
Bord
Pleanála**

Health and Safety Authority
The Metropolitan Building
James Joyce Street
Dublin
Dublin 1

Date: 22 December 2023

Re: Open Cycle Gas turbine power plant (350MW) and associated infrastructure
Located on land to the north of Tynagh Power Station, Derryfrench, Tynagh, Loughrea, Co. Galway.

Dear Sir / Madam,

An Bord Pleanála has received your recent letter in relation to the above mentioned case. The contents of your letter have been noted.

If you have any queries in the meantime, please contact the undersigned officer of the Board or email sids@pleanala.ie quoting the above mentioned An Bord Pleanála reference number in any correspondence with the Board.

Yours faithfully,

Ashling Doherty
Executive Officer
Direct Line: 01-8737160

PA36

Teil	Tel	(01) 858 8100
Glao Áitiúil	LoCall	1800 275 175
Facs	Fax	(01) 872 2684
Láithreán Gréasáin	Website	www.pleanala.ie
Ríomhphost	Email	bord@pleanala.ie

64 Sráid Maoilbhríde	64 Marlborough Street
Baile Átha Cliath 1	Dublin 1
D01 V902	D01 V902

Ashling Doherty

From: Geoff Hynes <Geoff_Hynes@hsa.ie>
Sent: Thursday 21 December 2023 16:33
To: SIDS
Subject: RE: ABP-317810-23
Attachments: ABP-317810-23 Tynagh North OCGT PAR 4169 Response to ABP.pdf

To whom it may concern,

Please see attached in relation to the above referenced development.

Regards,

Geoff

Geoff Hynes
Inspector | CCPS Unit | Health & Safety Authority
Mobile: 087-6002298
Email: geoff_hynes@hsa.ie
Web: www.hsa.ie

Health and Safety Authority,
Metropolitan Building,
James Joyce Street,
Dublin 1,
D01 KOY8

An tÚdarás Sláinte agus Sábháilteachta,
An Foirgneamh Uirbeach,
Sráid James Joyce,
Baile Átha Cliath 1
D01 KOY8



Ár bhFis: Saolta agus fiontair shláintiúla, shábháilte agus tháirgiúla
Our Vision: Healthy, safe and productive lives and enterprises

[HSA Twitter](#)
[HSA Facebook](#)
[HSA YouTube](#)

This email and any files transmitted with it are confidential and intended solely for the use of the individual or entity to whom they are addressed. If you have received this email in error please notify the system manager.

The Health and Safety Authority, its servants or agents, accept no liability for any errors or omissions in the information provided in this correspondence or for any loss or damage occasioned to any person as a result of using the information provided.

This footnote also confirms that this email message has been swept for the presence of computer viruses.



An tÚdarás Sláinte agus Sábháilteachta
Health and Safety Authority

☎ 0818 289 389 ☎ landuseplanning@hsa.ie ☎ www.hsa.ie

An Bord Pleanála
64 Marlborough Street
Dublin 1
D01 V902
By email to: sids@pleanala.ie

Our Ref PAR 4169

21st December 2023

Re: ABP-317810-23, Open cycle gas turbine power plant (350 MW) and associated infrastructure located on land to the North of Tynagh power station, Derryfrench, Tynagh, Loughrea, Co. Galway

Dear Sir / Madam,

I am writing to you in response to a request for technical advice in relation to the above development. Following submission of the Authority's request for further information on 2nd October 2023, I now acknowledge receipt of the applicant's response, received from you on 8th December 2023.

The Health and Safety Authority can confirm, from the details received, that the development will constitute a new lower tier COMAH establishment.

However, the response provided by the Applicant in sections 4.1 and 4.2 & 4.19 is not sufficient to provide technical advice on the application. The Authority requires that the Land use-planning assessment submitted be updated accordingly to fully address the queries outlined in our request for further information on 2nd October 2023.

If you have any queries please contact the undersigned.

Yours sincerely

Geoff Hynes
Inspector,
COMAH, Chemical Production & Storage (CCPS)

Encl: Note on the Approach of the HSA to the Provision of Land-use Planning Advice



An tÚdarás Sláinte agus Sábháilteachta
Health and Safety Authority

00818 289 389 • landuseplanning@hsa.ie • www.hsa.ie

Note on the Approach of the HSA to the Provision of Land-use Planning advice.

The Authority, acting as the Central Competent Authority under the Chemicals Act (Control of Major Accident Hazards Involving Dangerous Substances) Regulations 2015 (S.I. 209 of 2015), gives technical advice in response to a notice sent by a planning authority under Part 11 of the Planning and Development Regulations 2001-2015. Under Regulation 24(2) of S.I. 209 of 2015, the technical advice on the effects of a proposed development on the risk or consequences of a major accident relates to the following types of developments within the consultation distance for an establishment:

- (a) the siting and development of new establishments;
- (b) modifications to establishments of the type described in Regulation 12(1);
- (c) new developments including transport routes, locations of public use and residential areas in the vicinity of establishments, where the siting, modifications or developments may be the source of, or increase the risk or consequences of, a major accident.

The advice given is for the purposes of assessing new development only. A full explanation of the Authority's Land Use Planning advice system can be found at [http://www.hsa.ie/eng/Your Industry/Chemicals/COMAH/Land Use Planning/](http://www.hsa.ie/eng/Your_Industry/Chemicals/COMAH/Land_Use_Planning/)

Your attention is drawn to Regulation 24(3) of S.I. 209 of 2015:

(3) The technical advice provided by the Central Competent Authority to a planning authority pursuant to paragraph (2) may be generic or case specific in nature and shall be so formulated that it will assist the planning authority to take into account the need, in the long term—

- (a) to maintain appropriate safety distances between establishments covered by these Regulations and residential areas, buildings and areas of public use, recreational areas, and, as far as possible, major transport routes;*
- (b) to protect areas of particular natural sensitivity or interest in the vicinity of establishments, where appropriate through appropriate safety distances or other relevant measures; and*
- (c) for the operator to take additional technical measures, in the case of existing establishments, in accordance with Regulation 7, so as not to increase the risks to human health and the environment.*

In giving its advice the Authority does not deal with routine emissions. Such emissions will be subject to EPA or Local Authority scrutiny and control.

The operator of an establishment covered by S.I. 209 of 2015 is also required to take all necessary measures to prevent major accidents occurring and to limit the consequences of any such major accidents for human health and the environment